

SECTION CORNER - O.D.O.T. D-22-516
 SET A #4 BAR WITH "CA 2054" CAP FOR CORNER.
 LOCATION WAS RE-ESTABLISHED BY SPLITTING FENCE
 LINES RUNNING EAST WEST. ALSO FOUND A #4 BAR
 WITH A "PLS 1587" CAP BUT DID NOT ACCEPT THIS
 LOCATION BECAUSE IT DID NOT FIT SURROUNDING
 IMPROVEMENTS. NO OKLAHOMA CERTIFIED CORNER
 RECORDS WAS ON FILE FOR THIS LOCATION.

SECTION CORNER - O.D.O.T. D-22-517
 SET A #4 BAR WITH "CA 2054" CAP FOR CORNER.
 LOCATION WAS RE-ESTABLISHED BY SPLITTING FENCE
 LINES RUNNING EAST WEST AND IN LINE WITH FENCE
 LINE RUNNING NORTH. ALSO FOUND A #4 BAR WITH "
 PLS JF WATSON" CAP REFERENCED IN OKLAHOMA
 CERTIFIED CORNER RECORDS FILED IN 2010 BUT DID
 NOT ACCEPT LOCATION BECAUSE OF THE METHOD IN
 WHICH IT WAS SET AND IT DID NOT FIT SURROUNDING
 IMPROVEMENTS.

SECTION CORNER - O.D.O.T. D-22-399
 FOUND AND ACCEPTED A #4 BAR WITH "PLS 1444" CAP.
 LOCATION IS IN AGREEMENT WITH OKLAHOMA CERTIFIED
 CORNER RECORDS FILED IN 2010 AND 2004 AND IS IN
 HARMONY WITH EXISTING IMPROVEMENTS. THE
 REFERENCE MONUMENTS WERE FOUND AND VERIFIED.

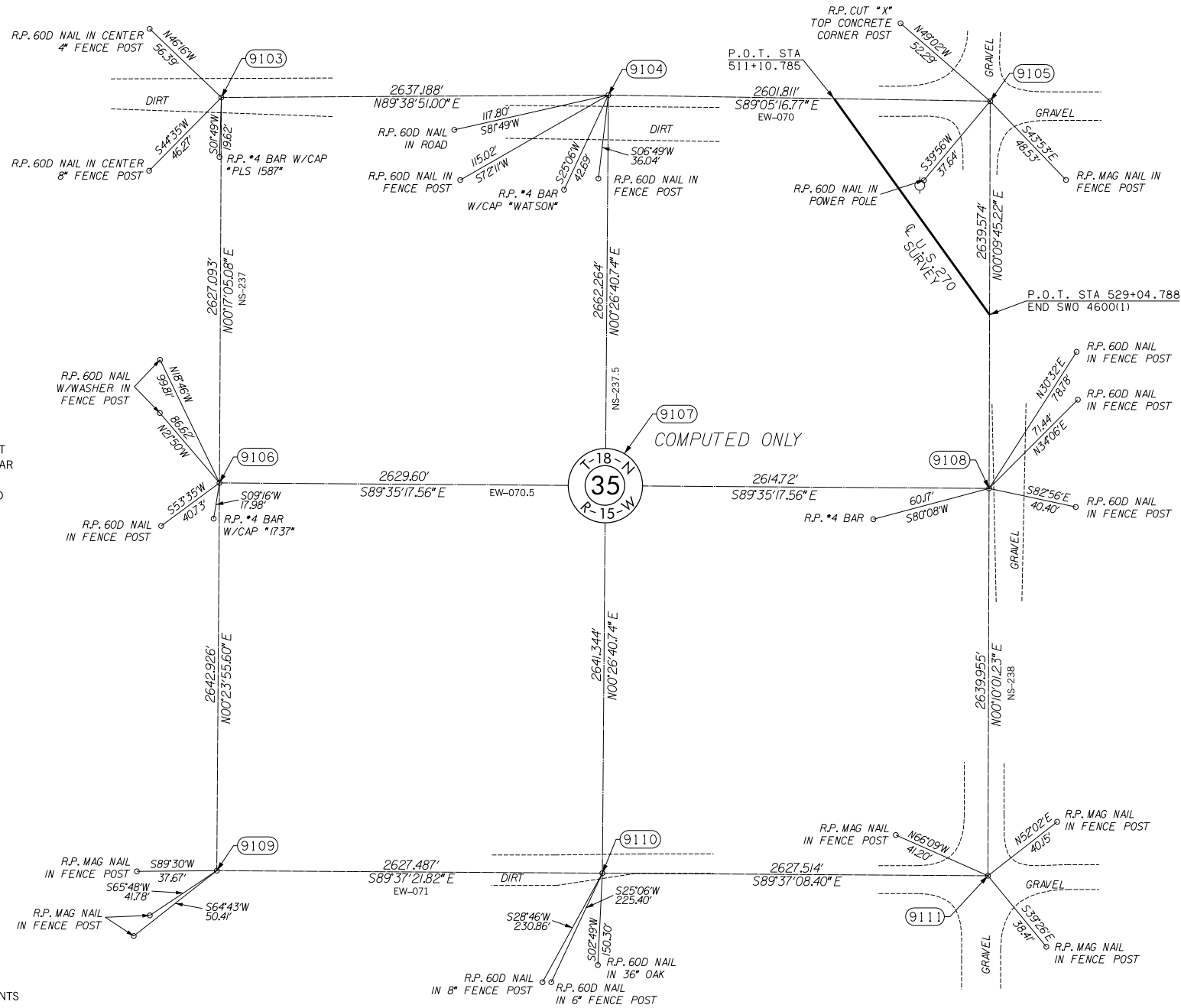
SECTION CORNER - O.D.O.T. D-22-518
 SET A #4 BAR WITH "CA 2054" CAP FOR CORNER.
 LOCATION WAS RE-ESTABLISHED TO BE IN AGREEMENT
 WITH EXISTING IMPROVEMENTS. ALSO FOUND A #4 BAR
 WITH "1737 OK" BUT DID NOT ACCEPT LOCATION
 BECAUSE OF THE METHOD IN WHICH IT WAS SET AND
 IT DID NOT FIT SURROUNDING IMPROVEMENTS.

SECTION CORNER - O.D.O.T. D-22-403
 FOUND AND ACCEPTED A #4 BAR WITH "1737 OK"
 CAP. LOCATION IS IN AGREEMENT WITH OKLAHOMA
 CERTIFIED CORNER RECORDS FILED IN 2010. THE
 REFERENCE MONUMENTS WERE FOUND AND VERIFIED.
 THE MONUMENT REFERENCED IN OKLAHOMA CERTIFIED
 CORNER RECORDS FILED IN 2002 WAS NOT FOUND.

SECTION CORNER - O.D.O.T. D-22-519
 FOUND AND ACCEPTED A #4 BAR. LOCATION IS IN
 AGREEMENT WITH OKLAHOMA CERTIFIED CORNER
 RECORDS FILED IN 1995. THREE REFERENCE MONUMENTS
 WERE FOUND AND VERIFIED.

SECTION CORNER - O.D.O.T. D-22-404
 FOUND AND ACCEPTED A #4 BAR. LOCATION IS IN
 AGREEMENT WITH OKLAHOMA CERTIFIED CORNER
 RECORDS FILED IN 2010, 2002, AND 1994 AND IS IN
 HARMONY WITH EXISTING IMPROVEMENTS. THE
 REFERENCE MONUMENTS WERE FOUND AND VERIFIED.

SECTION CORNER - O.D.O.T. D-22-520
 FOUND AND ACCEPTED A #4 BAR. LOCATION IS IN
 AGREEMENT WITH OKLAHOMA CERTIFIED CORNER
 RECORDS FILED IN 2010. THE REFERENCE MONUMENTS
 WERE FOUND AND VERIFIED.



SCALE:
1" = 500'

NOTE: REFERENCE'S SHOWN ARE NOT TO SCALE.

OKLAHOMA DEPARTMENT OF TRANSPORTATION SURVEY DIVISION			
PLS	KH		
DRAWN	CF,SK		
CHECKED	KH		
APPROVED	KH		
CREW	JH,SA,BH,DR	SWO 4600 (1)	PROJECT NO. 17671(34) SHEET NO. 541

SURVEY DATA SHEET